



MONTHLY MEMBERSHIP PROGRESS REPORT

District 14 G

Results as of: 05/31/2019

GMT: CINDY GREGG

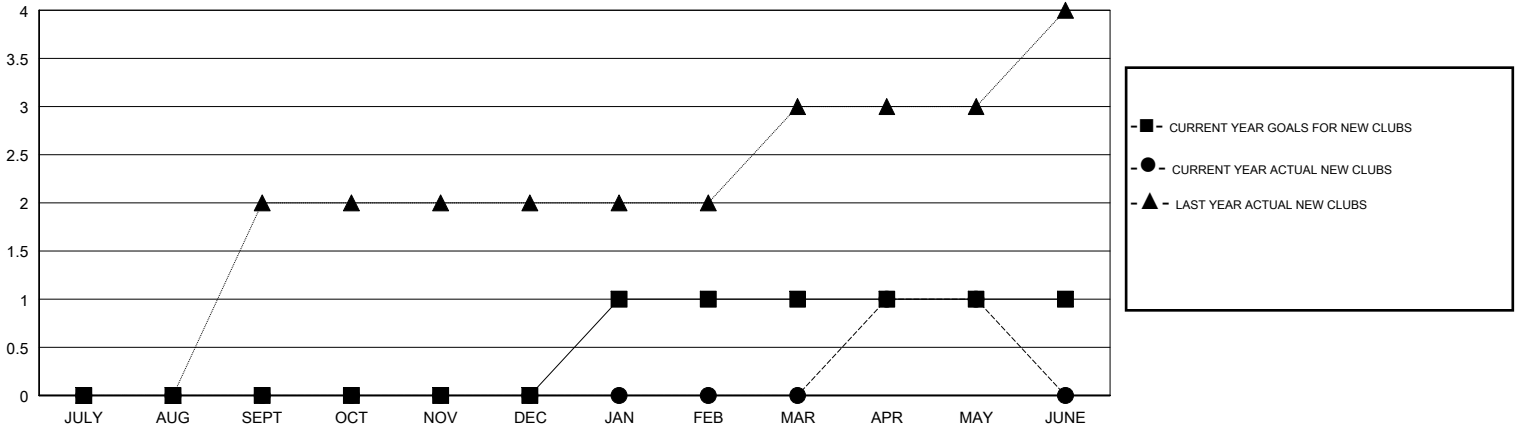
LOCATION PENNSYLVANIA

GMT CA

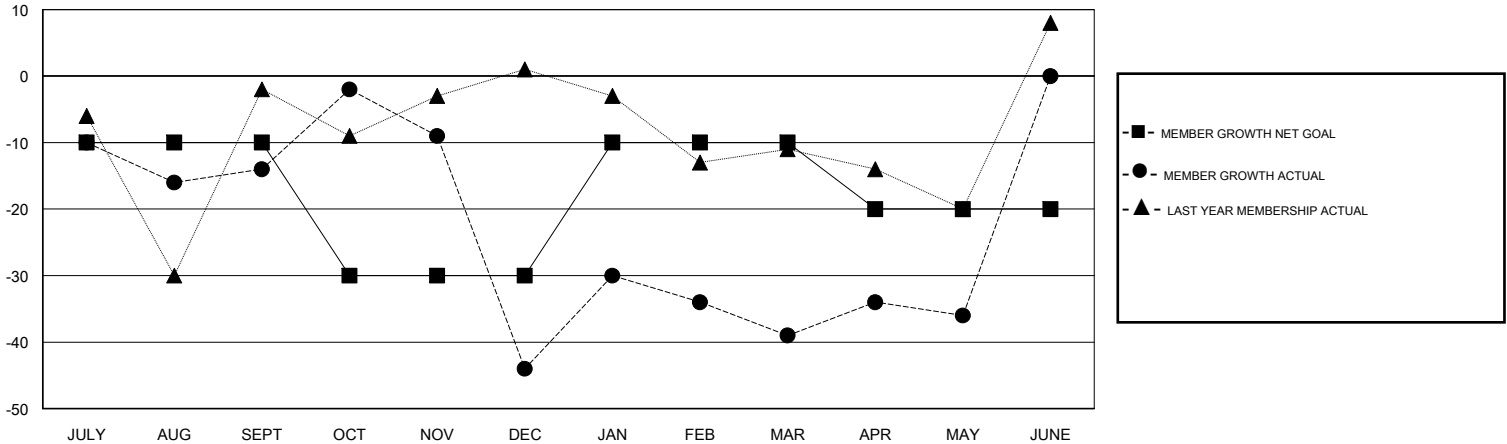
Clubs			
RESULTS FOR 2018-2019			
QUARTER	NEW CLUB GOAL	NEW CLUBS	DROPPED CLUBS
JULY/AUG/SEPT	0	0	1
OCT/NOV/DEC	0	0	0
JAN/FEB/MAR	1	0	0
APR/MAY/JUNE	0	1	0

Members			
RESULTS FOR 2018-2019			
QUARTER	MEMBER GROWTH NET GOAL	MEMBER GROWTH ACTUAL	DROPPED MEMBERS ACTUAL (including transfers)
JULY/AUG/SEPT	-10	13	25
OCT/NOV/DEC	-20	50	71
JAN/FEB/MAR	20	29	23
APR/MAY/JUNE	-10	51	45

GOALS AND ACTUAL NEW CLUBS CUMULATIVE



GOALS AND ACTUAL MEMBERS CUMULATIVE



DROPPED CLUBS: 1	33 CLUBS OF 62 ADDED 1 OR MORE NEW MEMBERS	<u>GENDER DISTRIBUTION</u>	
DROPPED MEMBERS		MALE	1,234 (72.89%)
DECEASED	21	FEMALE	459 (27.11%)
CLUB CANCELLED	3	Women Percentage Fiscal Year Goal: 24%	
OTHER	140	TOTAL FAMILY UNIT MEMBERS	319
TOTAL	164	FAMILY MEMBERS PAYING HALF DUES	163

[CLICK HERE FOR CUMULATIVE MEMBERSHIP DATA](#)